



# WELCOME



PUBLIC HEARING  
for the IL 100-106 River  
Crossing Project  
Florence Bridge -  
Phase I Study  
4:00 pm to 7:00 PM

*Please note the following safety measures in place for the hearing:*

- ▶ Attendance is limited to a maximum 50 people at any one time
- ▶ Masks are required (will be provided if you don't have one)
- ▶ Social distancing 6' from others is encouraged



## Hearing To-Do List:

1. Sign-in & pick up a handout
2. View the slide show
3. View the preferred alternative video fly over
4. Review the exhibits
5. Ask questions
6. Complete a comment form (Drop in, mail or email)

## Objectives of the Hearing:

1. Provide a project update
2. Review the preferred alternative (Alt. 4 C/D)
3. Review the Environmental Assessment (EA)
4. Review impacts to the existing river bridge



River Crossing Project

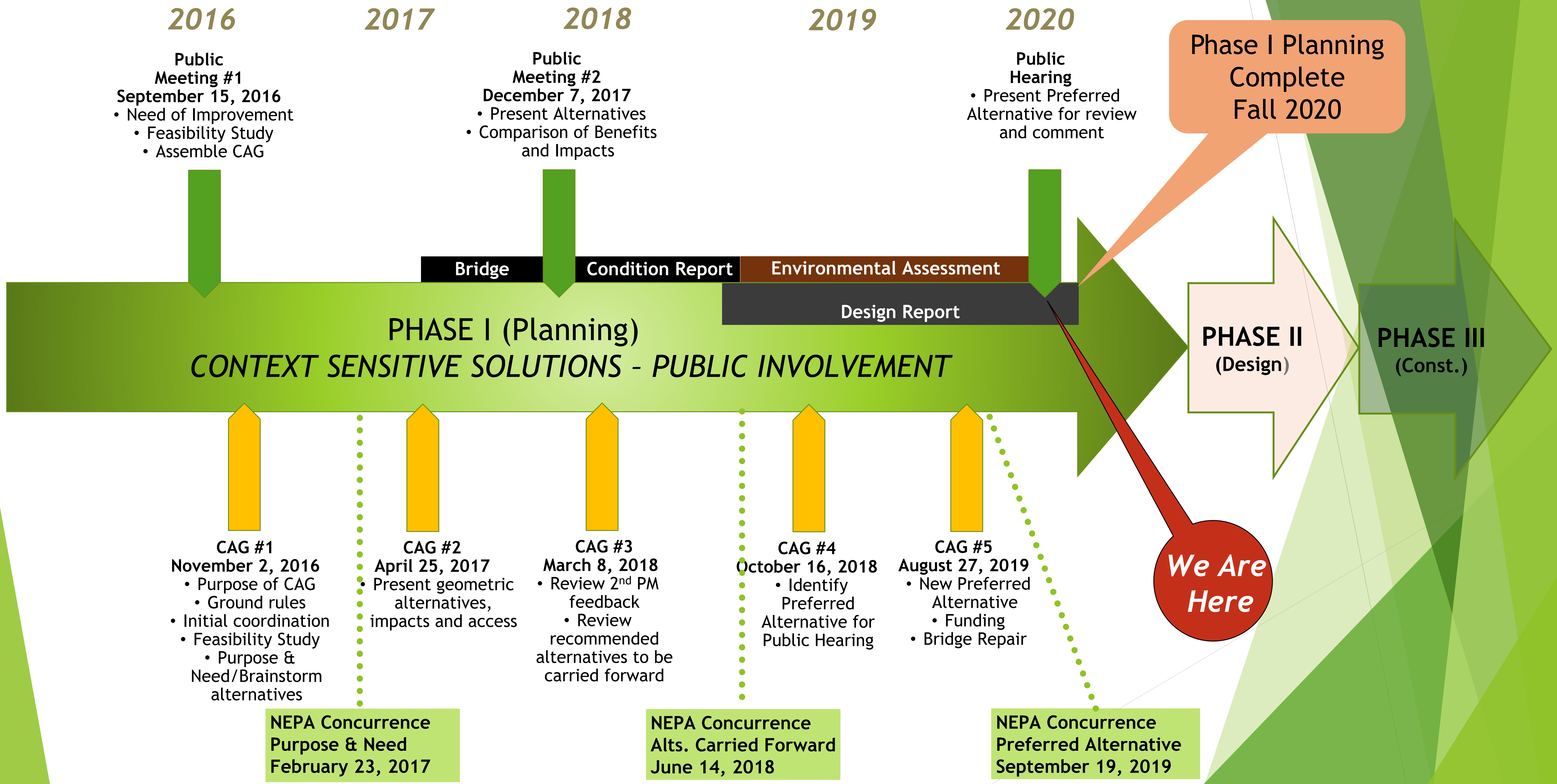
# Project Purpose & Need

- ▶ Serves as the basis for which all alternatives are evaluated.
- ▶ The **purpose** of the project is to provide safe and reliable connectivity across the Illinois River for all modes of traffic, facilitate improved river navigation, and support local and regional economic needs, while meeting current design standards and minimizing impacts to the environment and surrounding area.
- ▶ The project is **needed** because the existing IL 100/106 River Bridge is at the end of its useful service life, is increasingly costly to maintain, and its design is inadequate for current highway and river travel.

# Project Timeline



River Crossing Project

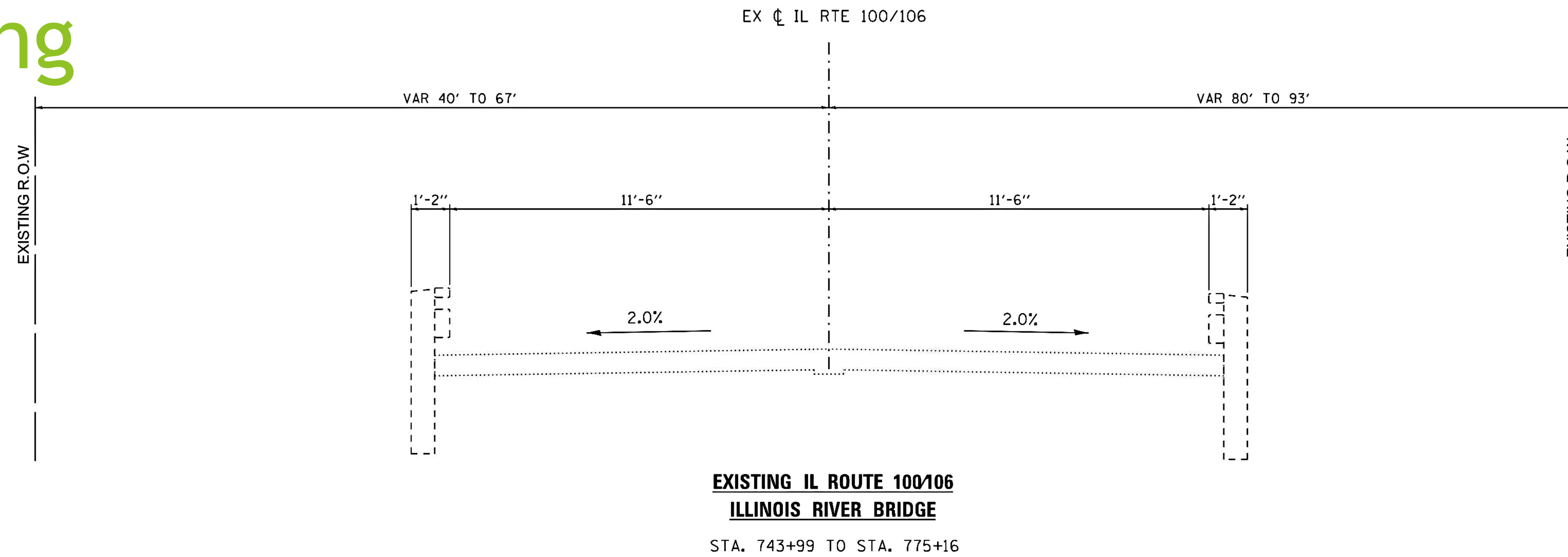


# Bridge Typical Sections

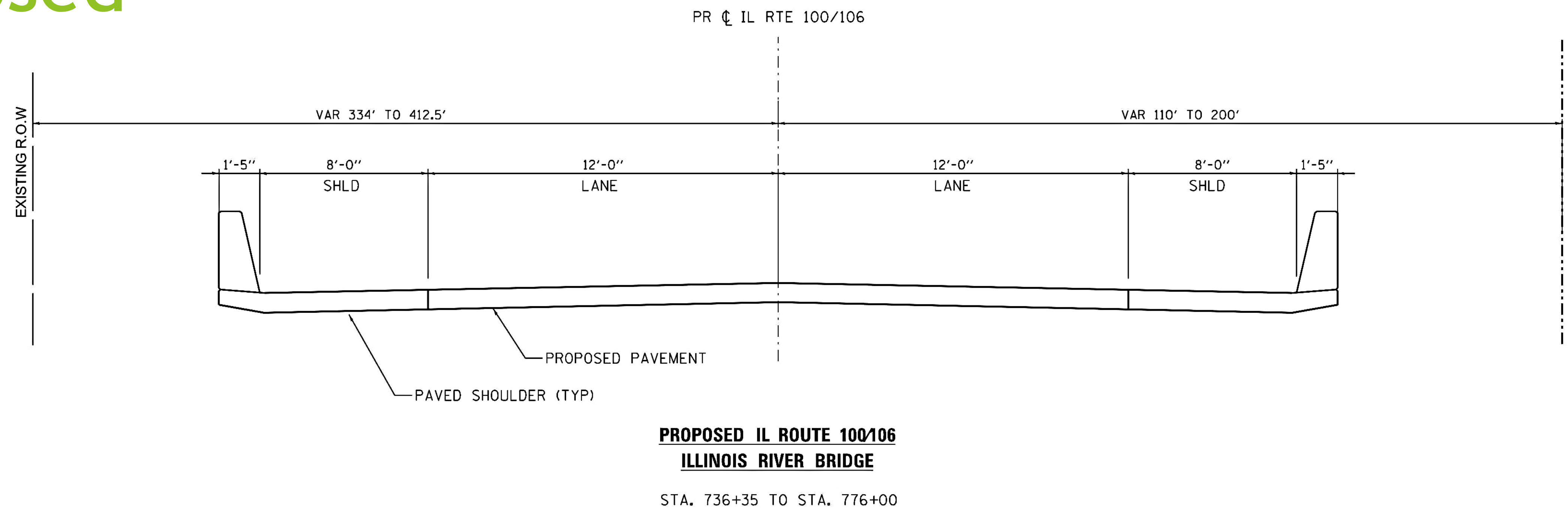


River Crossing Project

## Existing



## Proposed

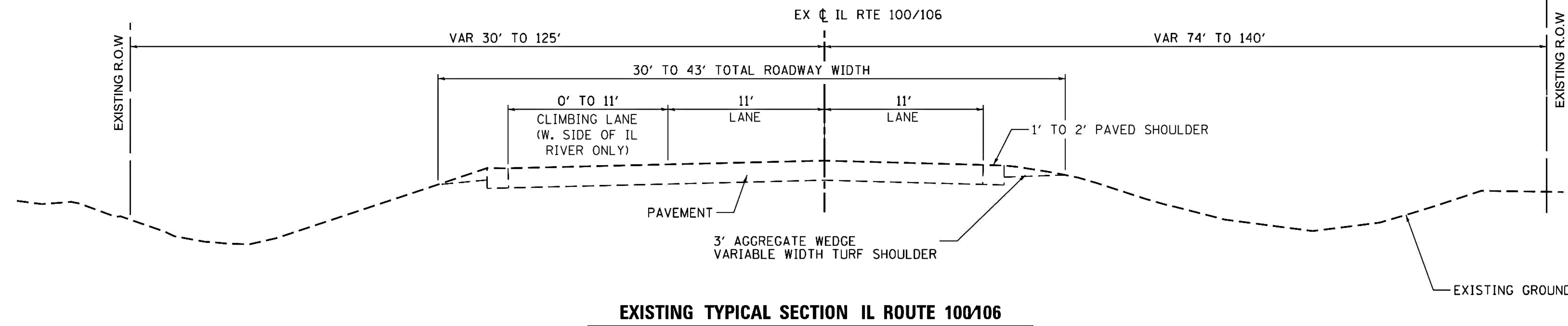


# Roadway Typical Sections

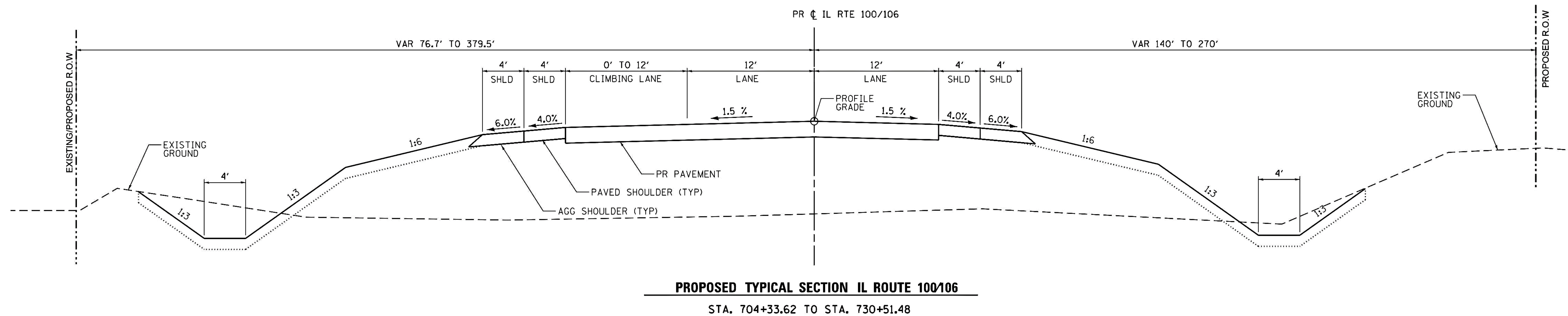
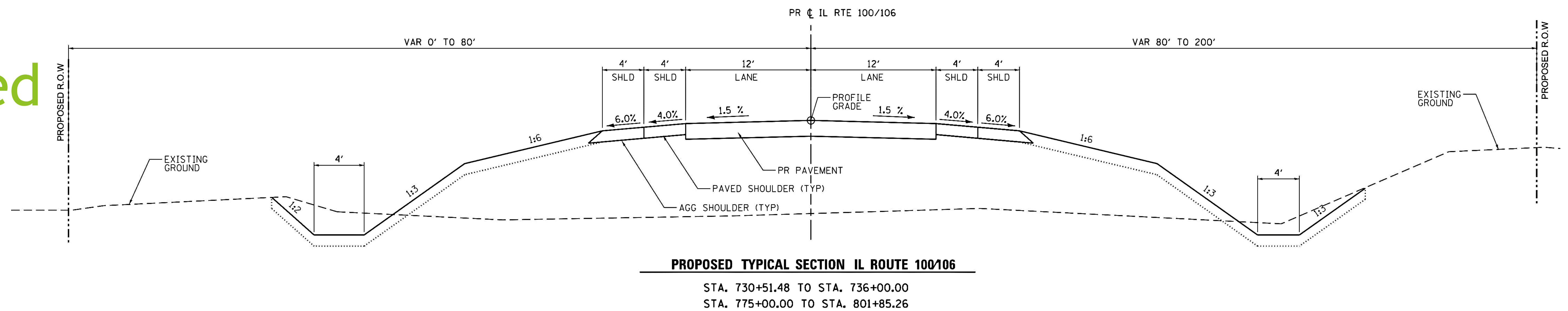


River Crossing Project

## Existing



## Proposed



# Environmental Impacts



River Crossing Project

## Agricultural Land

- ▶ 17.4 acres permanently taken out of service

## Cultural

- ▶ Sensitive archaeological site found; no direct impact
- ▶ Historic Florence Bridge adversely affected

## Natural Resources

- ▶ Mussel survey indicated no threatened or endangered mussel species found near the project
- ▶ Forest - 51.5 acres impacted by new construction; 5.5 acres impacted by bridge removal
- ▶ 2.24 acres of Decurrent False Aster impacted by new construction and bridge removal
- ▶ Northern long-eared bat and Indiana bat habitat impacted by new construction and bridge demolition
- ▶ Wetlands - 15.7 acres impacted by new construction; 11.6 acres impacted by bridge removal

## Right-of Way and Relocations

- ▶ 48.6 acres required for construction; 14.9 additional acres uneconomic remnants and protected area
- ▶ No relocations of residences or businesses

# Historic Bridge Coordination



River Crossing Project

## Section 106: Protecting Historic Resources

- ▶ **Historic Resource:** The existing IL 100/106 (SN 086-001) Bridge over the Illinois River in Florence, Illinois is eligible for listing on the National Register of Historic Places (NRHP), and therefore, it is afforded protection under Section 106 of the National Historic Preservation Act of 1966.
- ▶ **Adverse Effect:** The Proposed Action will require removal of the existing bridge, thus resulting in an adverse effect on the Historic Bridge.

## Section 4(f): Protecting Public Recreation

- ▶ **Section 4(f) Resource:** Section 4(f) of the Department of Transportation Act of 1966 protects publicly owned parks, recreation areas, wildlife or waterfowl refuges, and historic sites. By law, a Section 4(f) property may only be converted to a transportation use if there is no prudent and feasible alternative and the project has considered alternatives to avoid or minimize harm to the resource. The IL 100/106 River Bridge is eligible for listing on the NRHP and is a Section 4(f) Resource.



### ▶ Avoided Section 106 Resources:

- ▶ Known sensitive archaeological site
- ▶ Bridge carrying Abandoned US-36 over Little Blue Creek (SN 075-0160), near Florence
- ▶ Ellis Farmstead, 25466 475<sup>th</sup> Street, Florence
- ▶ Spring Hill Lodge, 25121 492<sup>nd</sup> Street, Florence
- ▶ 99<sup>th</sup> Illinois Infantry Memorial Historical Marker, near 25121 492<sup>nd</sup> Street, Florence

### ▶ Avoided Section 4(f) Resources:

- ▶ Pike County Boat Launch





# Historic Bridge Coordination

- ▶ **Efforts to Avoid or Minimize Impacts to the Resource:** The project studied 14 alternatives for the proposed improvement: Do- nothing; rehabilitate the existing bridge without affecting its historic integrity; build on a new alignment and leave the existing IL 100/106 River Bridge in place, preserving its historic integrity; and 11 new bridge alternatives on different alignments that include the removal of the existing bridge.

A Preferred Alternative has been selected that meets the project's Purpose and Need, avoids a known sensitive archaeological resource, does not displace residences or businesses, is located for better river navigation, and is supported by the public, local businesses and town representatives. The Preferred Alternative requires removal of the existing bridge.

- ▶ **Mitigation Measures:** IDOT, FHWA, and SHPO have initiated mitigation measures outlined in the June 2020 DRAFT Programmatic Section 4(f) Evaluation and Approvals. Below is an update on the status of the **Section 106** and **Section 4(f) Documentation:**
- ▶ Complete Section 106/Section 4(f) documentation of Adverse Effect
- ▶ Public Notice for Advertisement
- ▶ No responses received as of April 15, 2020
- ▶ Measures to minimize harm include Historic Illinois Engineering Record and video documentation
- ▶ Memorandum of Agreement between IDOT, FHWA and SHPO - *Pending*

